

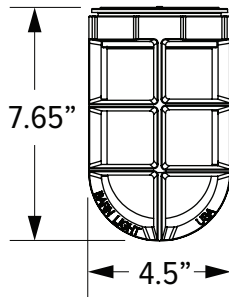


ACCESSORIES TO IMPRESS

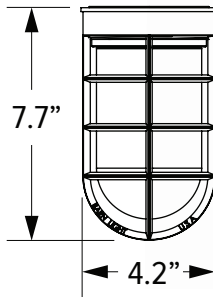
MKT-0021, REV B

Different accessories completely alter the look and feel of a light. By selecting a durable cast guard and glass or a rugged wire cage, our lights take on a trendy industrial character. Not only are these accessories stylish, but they also protect the bulb in commercial or industrial settings!

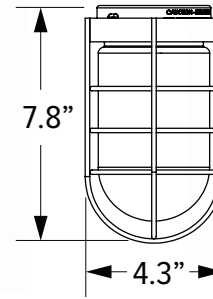
GUARD OPTIONS



TGG Heavy Duty Cast Guard



CGG Standard Cast Guard



WGG Wire Guard



GLASS OPTIONS

Not Applicable with Halogen Lights



CLR
Clear



FST
Frosted



RIB
Ribbed



SMK
Smoke Crackle



BLU
Blue



GRN
Green



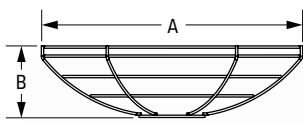
RED
Red



AMB
Amber

WIRE CAGE

Not Applicable with Guard and Glass or Select Shade Styles



WC Wire Cage

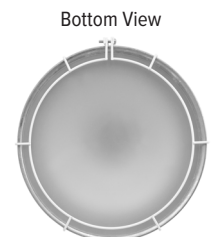
DIAMETER (A)	HEIGHT (B)
8"	2.7"
10"	2.9"
11"	3.2"
12"	3.4"
13"	3.7"
14"	3.9"
15"	4.2"
16"	4.4"
17"	4.7"
18"	4.9"
20"	5"

ACRYLIC DIFFUSER

Not Applicable with Guard and Glass, GU24 Sockets, or Select Shade Styles



Shade Not Included



ACR Acrylic Diffuser

*Please contact Barn Light Electric with any questions regarding applicable shade sizes and light sources.