

BLE - S - MA5 - _____ - _____
 A **B**

Order Example: BLE - S - MA5 - 12 - WC

A - MOUNTING OPTIONS

STEM MOUNT OPTIONS:

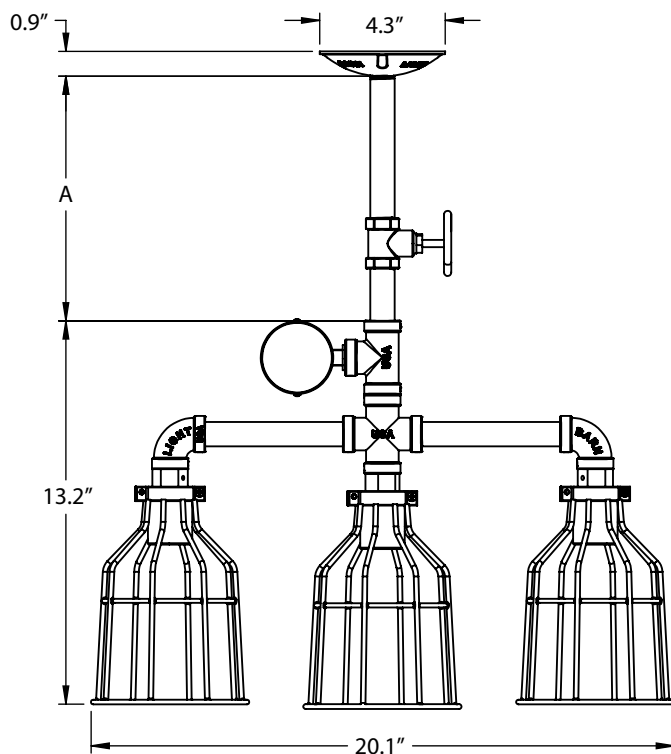
| | |
|-----------|------------------------|
| 6 | 6" Stem, .5" Diameter |
| 12 | 12" Stem, .5" Diameter |
| 18 | 18" Stem, .5" Diameter |
| 24 | 24" Stem, .5" Diameter |
| 36 | 36" Stem, .5" Diameter |
| 48 | 48" Stem, .5" Diameter |

B - WIRE CAGE

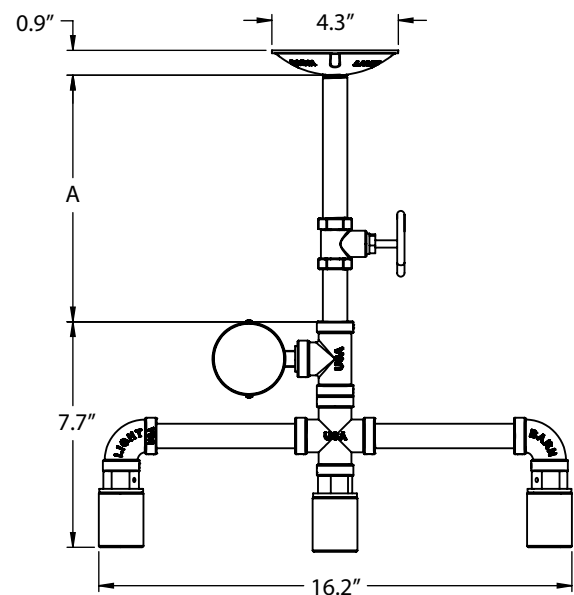
NA None/No Wire Cage
WC Wire Cage

IMPORTANT:

MOUNTING DIMENSIONS



SHOWN ABOVE WITH: 6" STEM & WIRE CAGES



SHOWN ABOVE WITH:
6" STEM & NO WIRE CAGES

| STEM LENGTH | LENGTH (A) |
|---------------|------------|
| 6 (6" Stem) | 8.4" |
| 12 (12" Stem) | 14.4" |
| 18 (18" Stem) | 20.4" |
| 24 (24" Stem) | 26.4" |
| 36 (36" Stem) | 38.4" |
| 48 (48" Stem) | 50.4" |

SPECIFICATIONS

CERTIFICATIONS, LISTINGS & WARRANTY

MADE IN THE USA
Manufactured and Hand-Crafted in Our 60,000 Square Foot Facility
Located in Titusville, FL

UL LISTED FOR DRY LOCATIONS

LIMITED WARRANTY
For Additional Information on Our Limited Warranty, Please See
Our Terms & Conditions

LIGHT SOURCE

INCANDESCENT
(3) Medium Base E26 Sockets, 120 VAC, 60W Max

CONSTRUCTION & FINISH

STEAMPUNK AESTHETIC
Embellished with Valves, Gauges and Other Industrial Flourishes to
Demonstrate the Machine Age Heritage

AGED ALUMINUM FINISH

MOUNTING ARM
1/2" Nominal (.84" Actual) Sch 40, 6063 Aluminum Mounting Arm