



REV 11.18.19  
**SET OF 4 - DIPPED ENAMEL DESSERT PLATES**  
BARN LIGHT DINNERWARE COLLECTION  
Max Weight: 10.0 lbs

PROJECT NAME \_\_\_\_\_

PROJECT TYPE \_\_\_\_\_

**SPS-0386**

**BLE - SMPLATE1 - DIP -** \_\_\_\_\_

**A**

Order Example: BLE - SMPLATE1 - DIP - 750

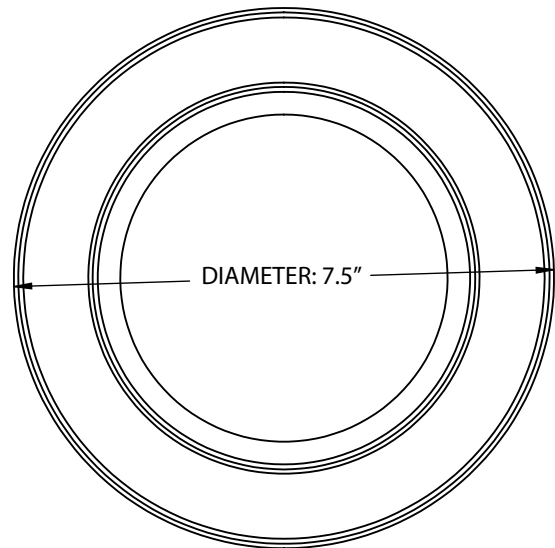
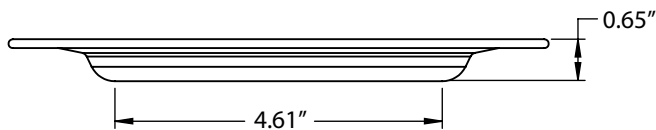
#### **A - DIPPED FINISH**

##### **PORCELAIN FINISHES:**

<b>150</b>	Black
<b>350</b>	Vintage Green
<b>355</b>	Jadite
<b>650</b>	Bronze
<b>750</b>	Cobalt Blue
<b>765</b>	Delphite Blue
<b>850</b>	Graphite
<b>950</b>	Metallic Chrome

#### **IMPORTANT:**

#### **DIMENSIONAL DRAWING**



#### **SPECIFICATIONS**

##### **CERTIFICATIONS**

###### **MADE TO ORDER**

All Dinnerware Is Specifically Made According to a Customer's Specifications and No Two Pieces Are Alike

PASSING RESULTS FOR THE FOLLOWING THIRD PARTY TESTS  
US FDA CPG 545.450 and CPG 545.400 Extractable Lead and Cadmium. California Proposition 65, Tableware and Safety Program, Leachable Lead and Cadmium. FDA 21 CFR 175.300, Resinous and Polymeric Coatings.

###### **DISHWASHER & OVEN SAFE**

While Dishwasher Safe, Barn Light Recommends Avoiding Harsh Detergents and Crowding in the Dishwasher. All Dinnerware Is Oven Safe up to 450° F/232° C.

##### **DESIGN & FINISHES**

###### **MADE IN THE USA**

Manufactured and Hand-Crafted in Our 60,000 Square Foot Facility Located in Titusville, FL

###### **CONSTRUCTION**

Hand-Spun from 20 Gauge Sheet Metal Therefore Not Suitable for Microwave Use

###### **PORCELAIN FINISHES**

Applied by Hand and Fired in a High Temperature Oven