



BARN LIGHT ELECTRIC COMPANY®

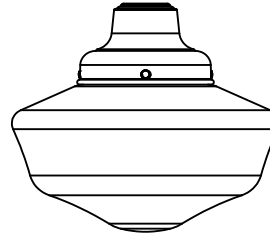
INSTALLATION INSTRUCTIONS G64/G65 GOOSENECK FIXTURE WITH DUSK-TO-DAWN PHOTOCELL

Thank you for purchasing from Barn Light Electric, America's leading manufacturer of hand-crafted shades and exclusive source for porcelain enamel lighting! For questions or concerns about your purchase, please contact us!

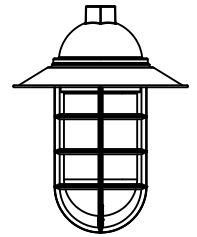
INS-0069 REV B (HWK-0096)

ALTERNATE FIXTURES

Although the illustration below includes an RLM shade, these alternative fixtures follow the same installation instructions.



Schoolhouse Fixture



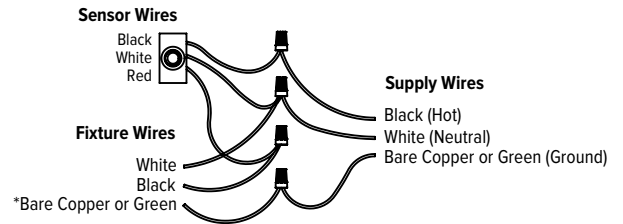
Guard & Glass Fixture

IMPORTANT

Read all instructions before assembly. Installation is to be done by a qualified professional. **For wet locations, junction between the mounting surface and luminaire must be sealed with caulking.**

CAUTION: Risk of fire, this product must be installed in accordance with the applicable installation code by a person familiar with the construction and operation of the product and the hazards involved.

WIRING DIAGRAM

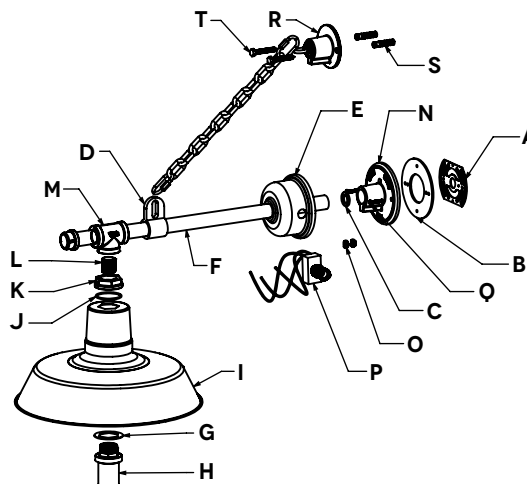


INSTRUCTIONS

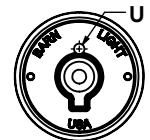
1. Disconnect power at the electrical panel before installation.
2. Secure adapter bracket (A) to junction box (if necessary) with two mounting screws. **NOTE: Mounting screws not included.**
3. Remove center from foam gasket (B) and use appropriate size foam o-ring (C) from insert.
4. Carefully slip the male eared clamp (D) and cover (E) onto the arm (F).
5. Place socket gasket (G) onto socket (H). Feed socket (H) wires through shade (I), coupler o-ring (J) and coupler (K).
6. Insert socket (H) into the shade (I) and screw on coupler (K), rotate coupler counter-clockwise. **NOTE: Ensure coupler o-ring (J) is seated in coupler (K) groove.**
7. Feed wires through nipple (L), tee fitting (M), arm (F), cover (E), foam o-ring (C), wall backing plate (N) and gasket (B).
8. Thread nipple (L) into tee fitting (M). Tighten set screw and then screw shade (I) assembly onto the tee fitting (M) until tight. **NOTE: Use pipe joint compound or teflon tape to seal connection.**
9. Insert arm (F) and appropriate foam o-ring (C) into wall backing plate (N). With arm (F) pressed into wall backing plate (N) firmly, tighten both set screws (O) to lock arm (F) into place.
10. Feed sensor (P) wires through 3/8" hole (U) in wall backing plate (N) and gasket (B). **NOTE: If no hole exists, drill 3/8" hole according to Detail A.**
11. Use wiring diagram and wire nuts to wire supply wires to fixture and photo sensor (P).
12. Secure wall backing plate (N) to the adapter bracket (A) (if used) or directly to the junction box with two screws (Q). Tighten until flush and secure against the wall. **NOTE: Adjust fixture by loosening and retightening the set screws (O).**
13. Attach sensor cover (E) through sensor hole according to Detail B.
14. Extend male eared clamp (D) to desired location, mark mounting holes of chain base (R).
15. Drill (2) 1/2" holes for the wall anchors (S). Mount the chain base to the wall using lag bolts (T).

G64/G65 GOOSENECK FIXTURE WITH DUSK-TO-DAWN PHOTOCELL

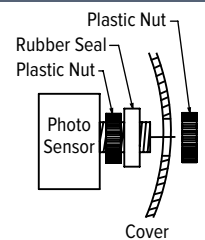
- | | |
|-----------------------|-------------------------------------|
| A. Adapter Bracket | R. Chain Base |
| B. Foam Gasket | S. Anchors |
| C. Foam O-Ring | T. Lag Bolts |
| D. Male Eared Clamp | U. Drill 3/8" Hole for Wire Routing |
| E. Cover | |
| F. Arm | |
| G. Socket Gasket | |
| H. Socket | |
| I. Shade (Varies) | |
| J. Coupler O-Ring | |
| K. Coupler | |
| L. Nipple | |
| M. Tee Fitting | |
| N. Wall Backing Plate | |
| O. Set Screws | |
| P. Photo Sensor | |
| Q. Screws | |



DETAIL A



DETAIL B



***IMPORTANT:** Mounting screws and wire nuts not included in hardware kit. Standard screw sizes include: 6-32, 8-32, 10-24 and 10-32.