



INSTALLATION INSTRUCTIONS G64/G65 GOOSENECK LIGHT

Thank you for purchasing from Barn Light Electric, America's leading manufacturer of hand-crafted shades and exclusive source for porcelain enamel lighting! For questions or concerns about your purchase, please contact us!

INS-0067 REV B (HWK-0093)

IMPORTANT

Read all instructions before assembly. Installation is to be done by a qualified professional. **For wet locations, junction between the mounting surface and luminaire must be sealed with caulking.**

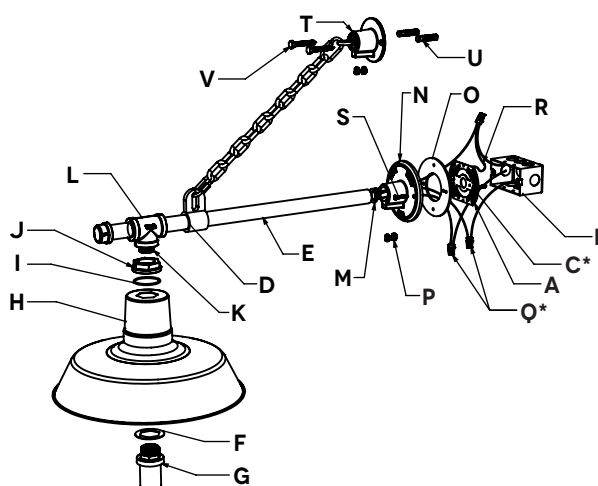
CAUTION: Risk of fire, this product must be installed in accordance with the applicable installation code by a person familiar with the construction and operation of the product and the hazards involved.

INSTRUCTIONS

1. Disconnect power at the electrical panel before installation.
2. If adapter bracket (A) is necessary, secure it to the junction box (B) with two mounting screws (C). **NOTE: Mounting screws (C) not included.**
3. Carefully slide male eared clamp (D) onto arm (E).
4. Place socket gasket (F) onto socket (G). Feed socket wires through shade (H), coupler o-ring (I) and coupler (J).
5. Insert socket (G) into the shade (H) and screw on coupler (J), rotate coupler counter-clockwise. **NOTE: Ensure coupler o-ring (I) is seated in coupler (J) groove.**
6. Feed wires through nipple (K), tee fitting (L), arm (E), foam o-ring (M), wall backing plate (N) and gasket (O).
7. Thread nipple (K) into tee fitting (L). Tighten set screw and then screw shade (H) assembly onto tee fitting (L) until tight. **NOTE: Use pipe joint compound or teflon tape to seal connection.**
8. Insert arm (E) and appropriate foam o-ring (M) into wall backing plate (N). With arm (E) pressed into the wall backing plate (N) firmly against the o-ring (M), tighten both set screws (P) to lock arm (E) into place.
9. Use wire nuts (Q) to connect power supply to the black wire and neutral wire to the white wire. **NOTE: Wire nuts (Q) not included.**
10. Attach ground wire (R) to junction box (B), green wire or bare wire.
11. Secure wall backing plate (N) to adapter plate (A) (if used) or directly to the junction box (B) with two screws (S). Tighten until flush against the wall. **NOTE: Level fixture by loosening and retightening the set screws (P).**
12. Extend male eared clamp (D) to desired location and mark mounting holes of the chain base (T).
13. Drill (2) 1/2" holes for the wall anchors (U). Mount the chain base (T) to the wall using lag bolts (V).

G64/G65 GOOSENECK LIGHT

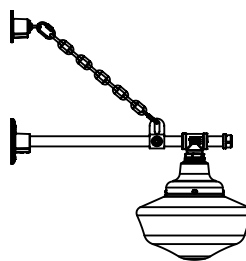
- | | |
|-----------------------|-------------------------|
| A. Adapter Bracket | Q. Wire Nuts* |
| B. Junction Box | R. Ground Wire |
| C. Mounting Screws* | S. Backing Plate Screws |
| D. Male Eared Clamp | T. Chain Base |
| E. Arm | U. Wall Anchors |
| F. Socket Gasket | V. Lag Bolts |
| G. Socket | |
| H. Shade (Varies) | |
| I. Coupler O-Ring | |
| J. Coupler | |
| K. Nipple | |
| L. Tee Fitting | |
| M. O-Ring | |
| N. Wall Backing Plate | |
| O. Gasket | |
| P. Set Screws | |



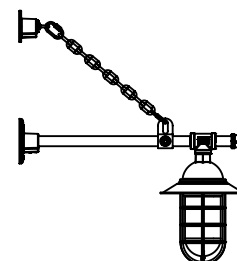
***IMPORTANT:** Mounting screws and wire nuts not included in hardware kit. Standard screw sizes include: 6-32, 8-32, 10-24 and 10-32.

ALTERNATE FIXTURES

Although the illustration below includes an RLM shade, these alternative fixtures follow the same installation instructions.



The Academia Schoolhouse
Gooseneck Light



The Industrial
Guard Gooseneck

WIRING DIAGRAM

