



INSTALLATION INSTRUCTIONS G36 ADJUSTABLE GOOSENECK

Thank you for purchasing from Barn Light Electric, America's leading manufacturer of hand-crafted shades and exclusive source for porcelain enamel lighting! For questions or concerns about your purchase, please contact us!

INS-0020 REV C (HWK-0042, HWK-0051)

IMPORTANT

Read all instructions before assembly. Installation is to be done by a qualified professional. **For wet locations, junction between the mounting surface and luminaire must be sealed with caulking.**

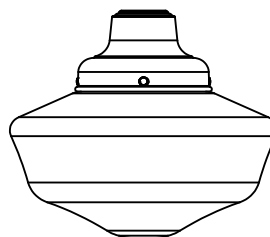
CAUTION: Risk of fire, this product must be installed in accordance with the applicable installation code by a person familiar with the construction and operation of the product and the hazards involved.

INSTRUCTIONS

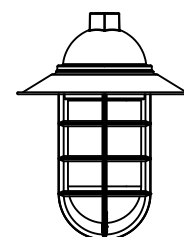
1. Cut main arm (A) to desired length (cut excess from the non-threaded end).
2. Slide male eared-clamp (B) onto main arm (A).
3. Disconnect power at the electrical panel before installation.
4. If adapter bracket (C) is necessary, secure to junction box (D) with two mounting screws (E). **NOTE: Mounting screws (E) not included.**
5. Remove center from foam gasket (F) and use appropriate size foam o-ring (G) from insert.
6. Place socket gasket (H) onto socket (I). Feed socket cord through shade (J), coupler o-ring (K) and coupler (L).
7. Insert socket (K) into shade (L) and screw on coupler (L), rotate counter-clockwise. **NOTE: Ensure o-ring (K) is seated in coupler (L) groove.**
8. Feed wires through nipple (M), arm elbow (N), arm (A), o-ring (H), wall backing plate (O) and gasket (G).
9. Thread nipple (M) into arm elbow (N). Tighten set screw and screw shade (K) assembly onto arm elbow (N) until tight. **NOTE: Use pipe joint compound or teflon tape to seal connection.**
10. Insert arm (A) and foam o-ring (G) into wall backing plate (O). With arm (A) pressed into wall backing plate (O), firmly tighten both set screws (P) to lock arm (A) in place.
11. Use wire nuts (Q) to connect power supply to the black wire and neutral wire to the white wire. **NOTE: Wire nuts (Q) not included.**
12. Attach ground wire to the junction box (D), green wire or bare wire.
13. Secure wall backing plate (O) to the adapter plate (D) (if used) or directly to the junction box (D) with two screws (R). Tighten until flush against the wall. **NOTE: Adjust the fixture by loosening and re-tightening the set screws (P).**
14. Cut gusset arm (S) to desired length and attach female eared-clamps (T) to each end of the gusset arm (S).
15. Install male eared baseplate (U) at desired location using lag bolts (V) and anchors (W). **NOTE: Use 1/2" drill bit for included wall anchors (W).**
16. Install gusset arm (S) using supplied bolts (X) and lock nuts (Y). Slide male eared-clamp (B) to connect to gusset arm (S). Tighten set screw (Z) to lock into place.

ALTERNATE FIXTURES

Although the illustration below includes an RLM shade, these alternative fixtures follow the same installation instructions.

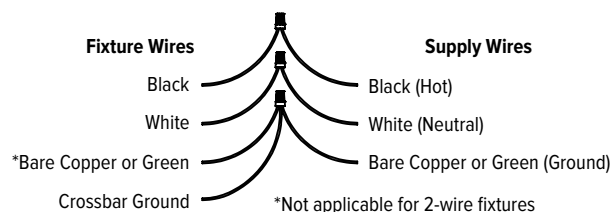


Schoolhouse Fixture

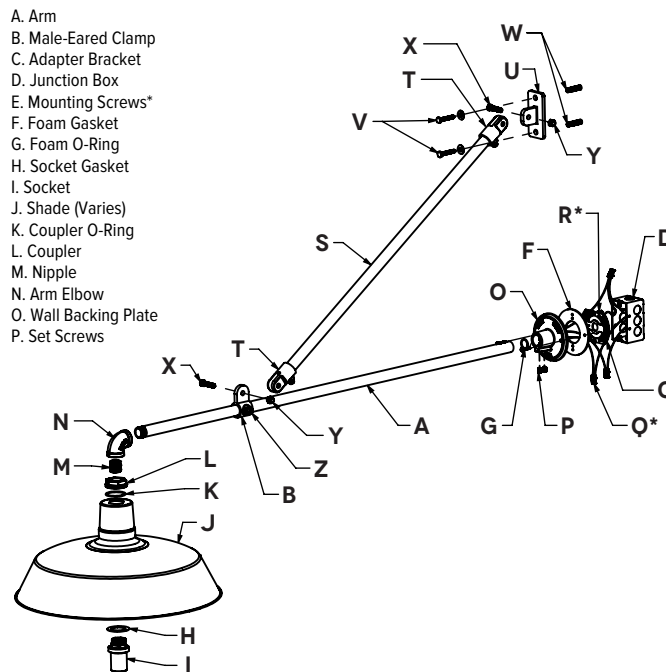


Guard & Glass Fixture

WIRING DIAGRAM



G36 ADJUSTABLE GOOSENECK



- Q. Wire Nuts
- R. Screws*
- S. Gusset Arm
- T. Female-Eared Clamp
- U. Male-Eared Base Plate
- V. Lag Bolts
- W. Anchors
- X. Bolts
- Y. Lock Nuts
- Z. Set Screw

***IMPORTANT:** Mounting screws and wire nuts not included in hardware kit. Standard screw sizes include: 6-32, 8-32, 10-24 and 10-32.