



SPS-0372 REV B

**BANTAM WILCOX WALL SCNCE**

JOB NAME: \_\_\_\_\_ FIXTURE TYPE: \_\_\_\_\_



BLE - W -	-	-	-	-	-	-	-
A	B	C	D	E	F		
G	H						

Order Example: BLE - W - DBW10 - 307 - WC - 975 - L-WL - CSBG - NA - E26

**A - SHADE SIZE****BANTAM WILCOX:**

- DBW8** 8" Shade  
**DBW10** 10" Shade

**B - FIXTURE FINISH****POWDER COAT FINISHES<sup>1</sup>:**

- 100** Black  
**105** Textured Black  
**106** Matte Black  
**200** White  
**206** Matte White  
**300** Dark Green  
**307** Emerald Green  
**311** Jadite  
**370** Mint  
**380** Chartreuse  
**390** Teal  
**400** Barn Red  
**420** Orange  
**470** Watermelon  
**480** Blush Pink  
**490** Magenta  
**495** Sherbet Orange  
**500** Buttery Yellow  
**570** Sunflower  
**600** Bronze  
**601** Chocolate  
**605** Rust  
**615** Oil-Rubbed Bronze  
**700** Royal Blue  
**705** Navy  
**710** Cobalt Blue  
**715** Delphite Blue  
**790** Lavender  
**800** Industrial Grey  
**805** Charcoal Granite  
**810** Graphite  
**975** Galvanized

**PORCELAIN FINISHES<sup>2</sup>:**

- 150** Black  
**250** White  
**350** Vintage Green  
**355** Jadite  
**455** Cherry Red  
**550** Yellow  
**650** Bronze  
**750** Cobalt Blue  
**765** Delphite Blue  
**850** Graphite  
**950** Metallic Chrome

**C - OPTIONAL SHADE ACCESSORY**

- NA** None  
**WC** Wire Cage  
**ACR** Acrylic Diffuser<sup>3,4</sup>

**D - OPTIONAL SHADE ACCESSORY FINISH**

Please Note: See **Section B** for all optional wire cage finish options.  
(I) If a porcelain finish is selected, wire cage will be powder coat painted-to-match.  
(II) If no wire cage is selected in Section C, please select NA.

- NA** Not Applicable

**E - PLUG-IN OPTION**

- NA** None  
**L-WL** Plug with Inline On/Off Switch<sup>5</sup>

**F - PLUG-IN CORD OPTION**

- NA** Not Applicable

**CSA LISTED CORD OPTIONS:**

- SBK** Standard Black Cord  
**SWH** Standard White Cord  
**CSB** Black Cloth Cord  
**CSW** White Cloth Cord  
**CSR** Red Cloth Cord  
**CSBW** Black & White Cloth  
**CSRW** Red & White Cloth  
**CSBG** Black & Gold Cloth  
**CSBP** Black & Pink Cloth  
**CSGW** Gold & White Cloth  
**CSUW** Blue & White Cloth  
**CSBB** Black & Brown Cloth

**G - DUSK-TO-DAWN PHOTOCELL**

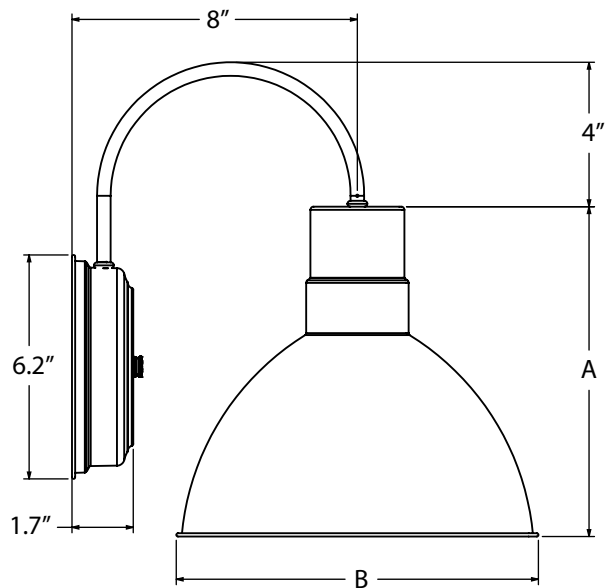
- NA** None/Not Applicable  
**DD** Dusk-to-Dawn Photocell<sup>6</sup>

**H - LIGHT SOURCE**

- E26** 200 Watt Max  
**GU24** 24 Bi-Pin, 23W Max<sup>7,8</sup>

**IMPORTANT:** (1) All Powder Coat finished shades, with the exception of Galvanized, feature a white interior (2) All Porcelain Enamel finished shades feature a white interior and a black outer rim (3) Acrylic Diffuser reduces wattage to 60W (4) Fixture is UL Listed for Damp Locations with Acrylic Diffuser (5) SWH-Standard White Cord and CSW-White Cloth Cord include a white plug and switch, all other cord options will include a black plug and switch (6) Option not available if Plug-In Option selected in Section E (7) Fixtures configured with a GU24 socket are non-returnable (8) Not available with Acrylic Diffuser accessory

MOUNTING DIMENSIONS



SHADE CODE	HEIGHT (A)	DIAMETER (B)
DBW8	8.4"	8"
DBW10	9"	10"

SPECIFICATIONS

CERTIFICATIONS, LISTINGS & WARRANTY

MADE IN THE USA  
Manufactured and Hand-Crafted in Our 60,000 Square Foot Facility Located in Titusville, FL

CSA LISTED FOR WET LOCATIONS  
(Plug-In Option CSA Listed for Dry Location Only,  
Acrylic Diffuser Option UL Listed for Damp Location Only,  
Acrylic Diffuser W/Plug-in Option UL Listed for Dry Location Only)

LIMITED WARRANTY  
For Additional Information on Our Limited Warranty, Please See Our Terms & Conditions

UL CERTIFICATION  
UL Listed Fixtures Available upon Request. Please Consult Factory for Additional Information.

CONSTRUCTION & FINISH

POWDER COAT SHADE  
Hand-Spun from High Purity 3003-O Temper Aluminum

PORCELAIN SHADE  
Hand-Spun from 20 Gauge Porcelain Steel

GALVANIZED SHADE  
Hand Spun from High Quality Galvanized Steel

POWDER COAT FINISHES  
Polyester Powder Coat Finishes Are Electro-Statically Applied and Thermocured

PORCELAIN FINISHES  
Applied by Hand and Fired in a High Temperature Oven

CONSTRUCTION & FINISH (CONTINUED)

BACKING PLATE  
Hand-Spun from High Purity 3003-O Temper Aluminum

WALL SCONCE ARM  
1/4" Nominal (0.50" Actual) Steel/Aluminum Mounting Arm

CORD & PLUG  
Complete with 8 Feet of Cord, 2-Prong Polarized Plug and Inline On/Off Switch

MAX FIXTURE WEIGHT  
10 lbs

LIGHT SOURCE

INCANDESCENT  
Medium Base E26 Socket, 120 VAC, 200W Max

COMPACT FLUORESCENT  
Bi-Pin Base GU24 Socket, 120 VAC, 23W Max